

Trinity 6/12 Analog 12 Zone LED Lighting Driver Dimmer

Flexible LED dimming control meets low-voltage power distribution.

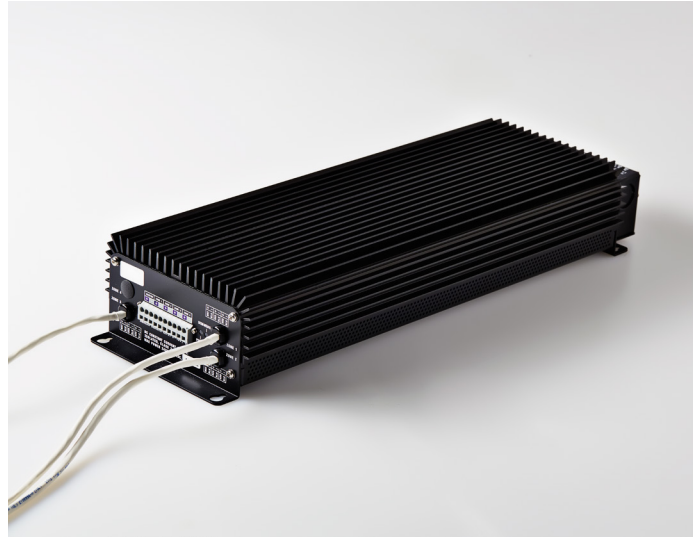
Product Description

The Trinity 12 Analog provides up to 12 independently configurable output control channels, plus a master control, combining the flexibility of digital control with the simplicity of an analog interface.

The Trinity 3-in-1 platform combines digital power conversion, constant current drivers, and superior dimming control into one cohesive LED power supply. The LumaStream core processor maximizes the efficiency of AC/DC power conversion at multiple stages, providing remarkably high power efficiency maintained across a wide range of dimming levels.

Ideal applications: hospitality, retail, architectural lighting.

Schedule ID	
Part Number	
Notes	



Key Features

- Powers LED luminaires up to 200 ft. from driver
- Up to 12 independent control channels
- 0-10V lighting control
- Smooth, flicker-free dimming to 0.2%
- Digital AC/DC power conversion
- Drive currents from 350 mA to 1000 mA
- 87% efficiency rating
- Centralized surge protection
- Up to 243 watts total output power
- Reduces heat at fixture; protects LEDs
- UL listed; RoHS compliant

Model Options

Model #	Channels	Rated Input Current	Drive Current	Output Voltage	Output Power /Channel
70-12-0350-12Z-PI	12	2.2 - 1.0 A	350 mA	12 - 47 Vdc	4.2 - 16.5 W
70-09-0500-12Z-PI	9	2.2 - 1.0 A	500 mA	12 - 47 Vdc	6.0 - 23.5 W
66-12-0700-12Z-PI	12	2.7 - 1.1 A	700 mA	6 - 27 Vdc	4.2 - 18.9 W
66-09-1000-12Z-PI	9	2.7 - 1.1 A	1000 mA	6 - 27 Vdc	6.0 - 27.0 W
70-12-0350-12Z-PC	12	2.4 - 2.2 A	350 mA	12 - 47 Vdc	4.2 - 16.5 W
70-09-0500-12Z-PC	9	2.4 - 2.2 A	500 mA	12 - 47 Vdc	6.0 - 23.5 W
66-12-0700-12Z-PC	12	2.4 - 2.2 A	700 mA	6 - 27 Vdc	4.2 - 18.9 W
66-09-1000-12Z-PC	9	2.4 - 2.2 A	1000 mA	6 - 27 Vdc	6.0 - 27.0 W

70 series: up to 226 watt total output; 66 series: up to 243 watt total output; PI: hard wired installation, PC: power cord.

Trinity 12 Analog Specifications

Input

Rated Input Voltage	115 to 277 Vac hard wired ; 115 to 125 Vac power cord
Rated Input Frequency	47 - 63 Hz
Power Factor EN61000-3-2	@ 115 Vac, 100% load, 0.97 W/VA min
Input Current Total Harmonic Distortion	@ 115 Vac, 100% load, 13% max

Output

Rated Output Power	@ 40°C / 104°F ambient, 243 W max
Output Voltage	66 series: 6 to 27 Vdc; 70 series: 12 to 47 Vdc
Efficiency	87% with 100% load @ 115 Vac input
System Power Cycle Delay	2 second typical time required for stabilization of all outputs
Output Current Tolerance	+/-5 % of nominal

System Protection

Output	Over voltage, over current, short circuit protection
Over Temperature	Power supply will shut down when external ambient temperature exceeds 43°C/ 109.4°F or case temperature reaches 85°C/ 185°F nominal.
Output Interconnection	Hiccup mode with automatic recovery upon removal of short. Only applies to +ve to -ve interconnections.

Safety and EMI/EMC

Agency Approvals	UL 8750 Class 2 outputs
Conducted and Radiated Emissions	ICES-003; FCC Title 47, Part 15, Class A (for commercial use only)
EN61000-3-2	Harmonics Emissions, Class C
EN61000-4-4	Electrical Fast Transient, 1KV Criteria B
EN61000-4-5	Surge, 2KV Criteria B
EN61000-4-11	Voltage Dips, Interruptions, and Voltage Variations, according to EN61547

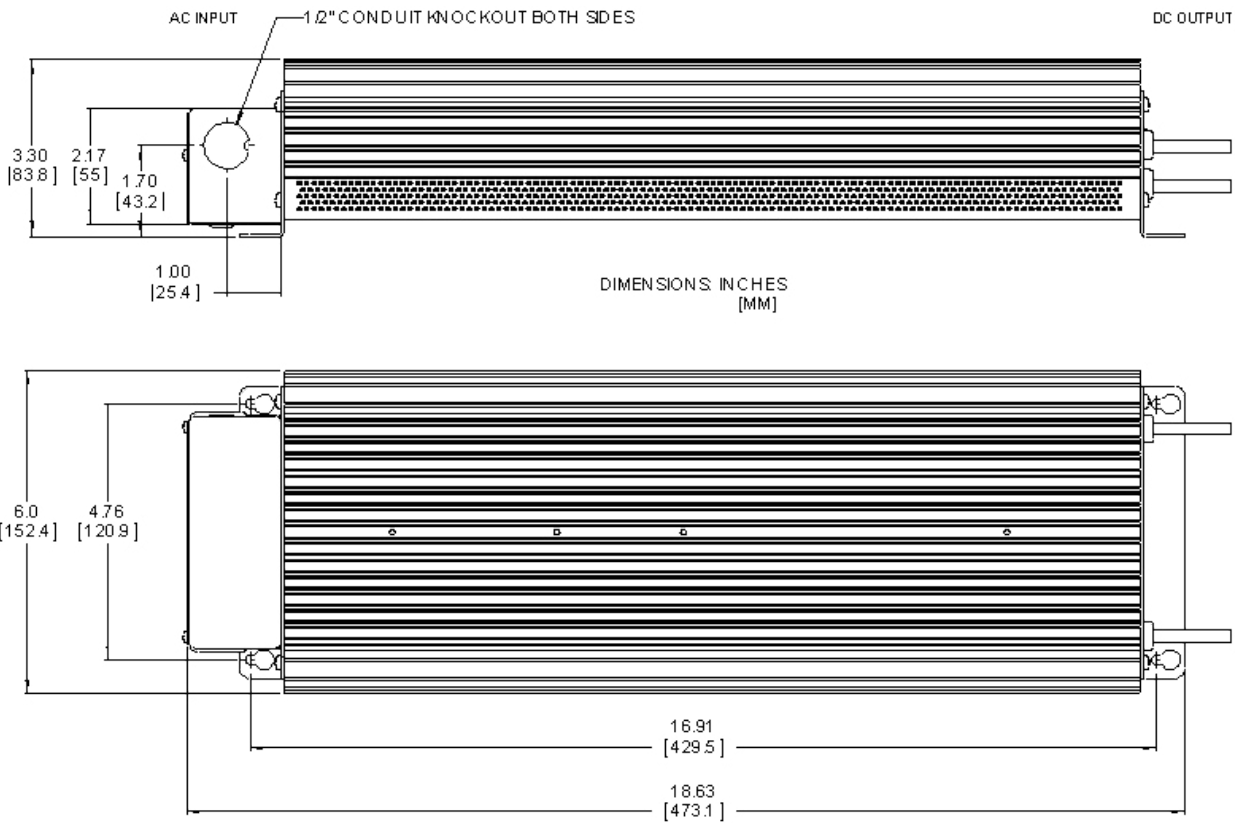
Environmental

Location Rating	Dry
Operating Ambient Temperature	-20°C to 40°C / -4°F to 104°F
Cold Start Temperature	-20°C / -4°F
Storage Ambient Temperature	-40°C to 80°C / -40°F to 176°F
Relative Humidity	5% to 95% noncondensing
Mean Time Between Failure (MIL HDBK-217F); (12 channel)	>60,000 hours @ 40°C / 104°F; >97,000 hours @ 25°C / 77°F

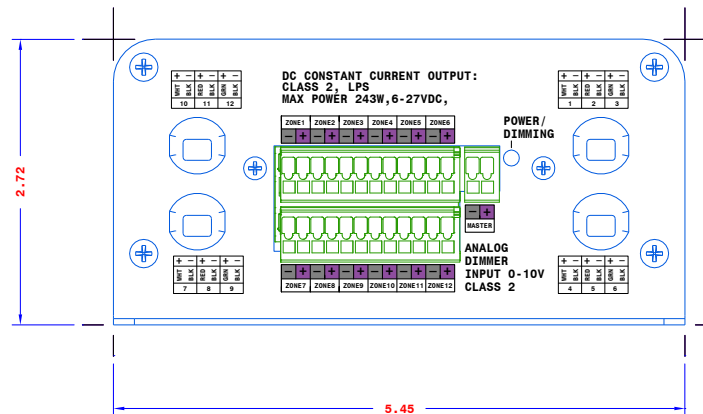
Control Interface

Control Method	Analog 0-10 Vdc, IEC 60929 Annex E Outputs 0.5 mA max or variable 0-10 Vdc Voltage Source; Class 2 outputs.
Control Zones	Master control: simultaneous control of all the output channels. Zonal control: up to 12 independently configurable output channels.
Loss of Analog Input Signal	Outputs will go to 0% or 100% light intensity in less than 1 second; must set default valve, 0% or 100%

Mechanical Specifications



End Panel



For more information, please contact:

+1 (727) 827-2805

sales@lumastream.com

LumaStream, Inc. reserves the right to make changes without further notice to any products herein to improve reliability, function, or design. LumaStream does not assume any liability arising out of the application or use of any product described herein; neither does it convey any license under its patent rights, nor the rights of others.

LSPS16 / Trinity 6/12 Analog 12 Zone

