

Trinity 6

Analog 4 Zone

LED Lighting Driver Dimmer

High-power LED driver with analog dimming and zonal control.

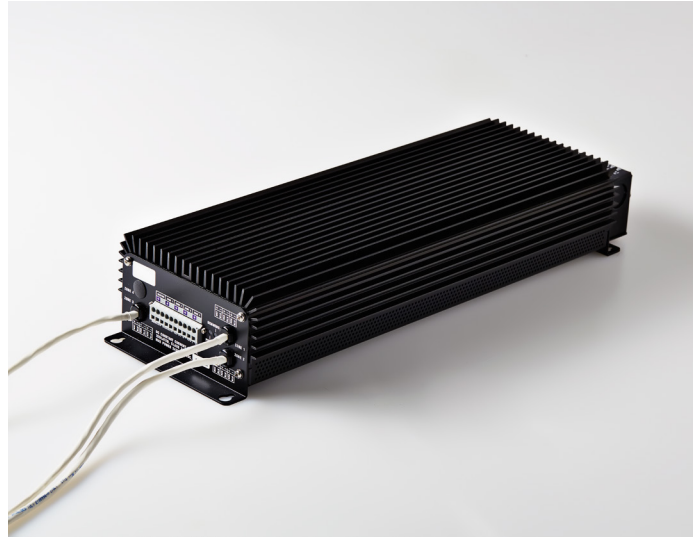
Product Description

The Trinity 6 Analog multi-channel driver is ideal for high-power LED applications where analog control is preferred.

The Trinity 3-in-1 platform combines digital power conversion, constant current drivers, and superior dimming control into one cohesive LED power supply. The LumaStream core processor maximizes the efficiency of AC/DC power conversion at multiple stages, providing remarkably high power efficiency maintained across a wide range of dimming levels.

Ideal applications: restaurant, hospitality, banking, architectural lighting.

Schedule ID	
Part Number	
Notes	



Key Features

- Powers LED luminaires up to 200 ft. from driver
- Up to 12 independent control channels
- 0-10V lighting control
- Smooth, flicker-free dimming to 0.2%
- Digital AC/DC power conversion
- Drive currents from 600 mA to 1400 mA
- 87% efficiency rating
- Centralized surge protection
- Up to 243 watts total output power
- Reduces heat at fixture; protects LEDs
- UL listed; RoHS compliant

Model Options

Model #	Channels	Rated Input Current	Drive Current	Output Voltage	Output Power /Channel
66-12-0600-ANA-3	12	2.7 - 1.1 A	600 mA	6 - 27 Vdc	3.6 - 16.2 W
66-12-0700-ANA-3	12	2.7 - 1.1 A	700 mA	6 - 27 Vdc	4.2 - 18.9 W
66-09-0800-ANA-3	9	2.7 - 1.1 A	800 mA	6 - 27 Vdc	4.8 - 21.6 W
66-09-0900-ANA-3	9	2.7 - 1.1 A	900 mA	6 - 27 Vdc	5.4 - 24.3 W
66-09-1000-ANA-3	9	2.7 - 1.1 A	1000 mA	6 - 27 Vdc	6.0 - 27.0 W
66-06-1200-ANA-3	6	2.7 - 1.1 A	1200 mA	6 - 27 Vdc	7.2 - 32.4 W
66-06-1400-ANA-3	6	2.7 - 1.1 A	1400 mA	6 - 27 Vdc	8.4 - 37.8 W

Trinity 6 Analog 4 Zone Specifications

Input

Rated Input Voltage	115 to 277 Vac hard wired
Rated Input Frequency	50 - 60 Hz
Power Factor EN61000-3-2	@ 115 or 277 Vac, 100% load, 0.97 W/VA min
Input Current Total Harmonic Distortion	@ 115 or 277 Vac, 100% load, 13% max

Output

Rated Output Power	@ 40°C / 104°F ambient, 243 W max
Output Voltage	6 to 27 Vdc
Efficiency	87% with 100% load @ 277 Vac input
System Power Cycle Delay	2 second typical time required for stabilization of all outputs
Output Current Tolerance	+/-5 % of nominal

System Protection

Output	Over voltage, over current, short circuit protection
Over Temperature	Power supply will shut down when external ambient temperature exceeds 43°C/ 109.4°F or case temperature reaches 85°C/ 185°F nominal.
Output Interconnection	Hiccup mode with automatic recovery upon removal of short.

Safety and EMI/EMC

Agency Approvals	UL 60950-1, IEC60950-1, SELV, Class 2 outputs, LPS standard UL8750
Conducted and Radiated Emissions	EN55022; ICES-003; FCC Title 47, Part 15, Class A (for commercial use only); EN55015 Conducted (external filter required)
EMC	EN61547- general lighting

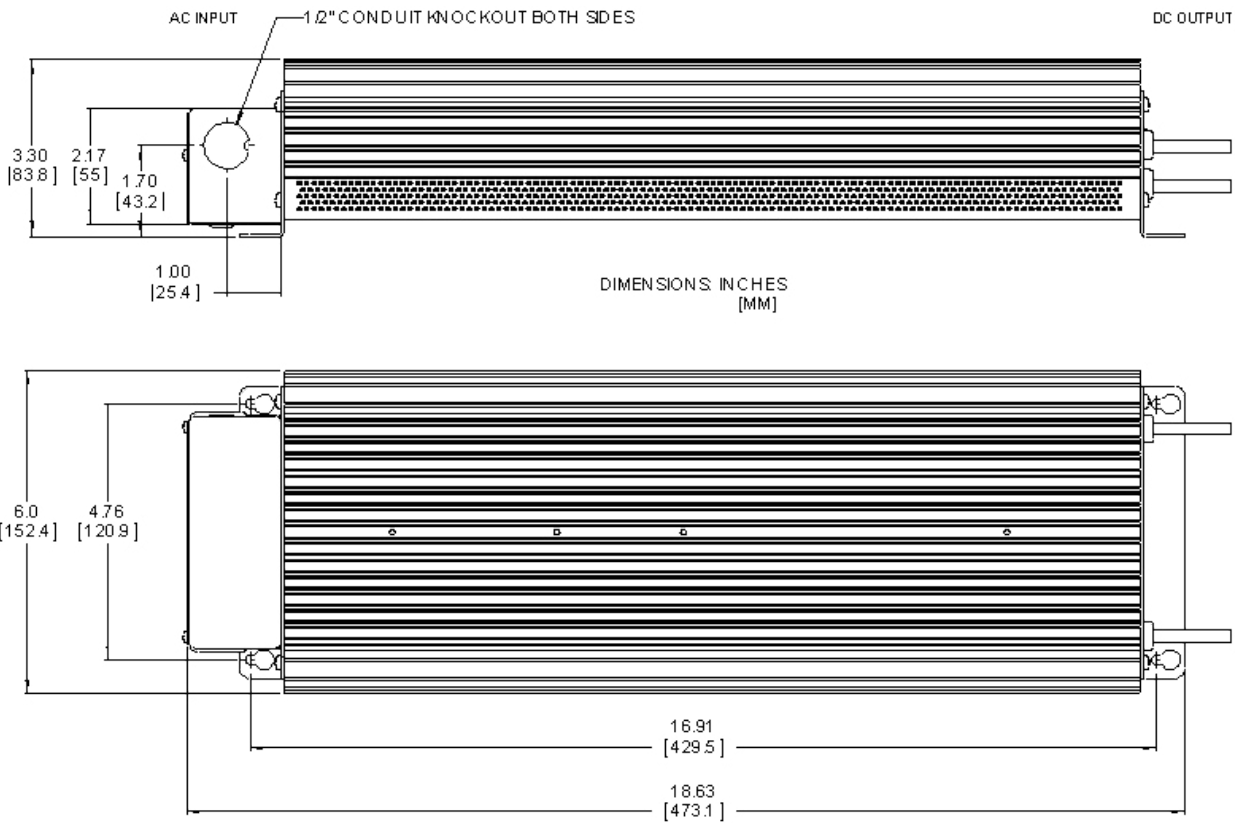
Environmental

Location Rating	Dry
Operating Ambient Temperature	-20°C to 40°C / -4°F to 104°F
Cold Start Temperature	-20°C / -4°F
Storage Ambient Temperature	-40°C to 80°C / -40°F to 176°F
Relative Humidity	5% to 95% noncondensing
Mean Time Between Failure (MIL HDBK-217F); (12 channel)	>60,000 hours @ 40°C / 104°F; >97,000 hours @ 25°C / 77°F

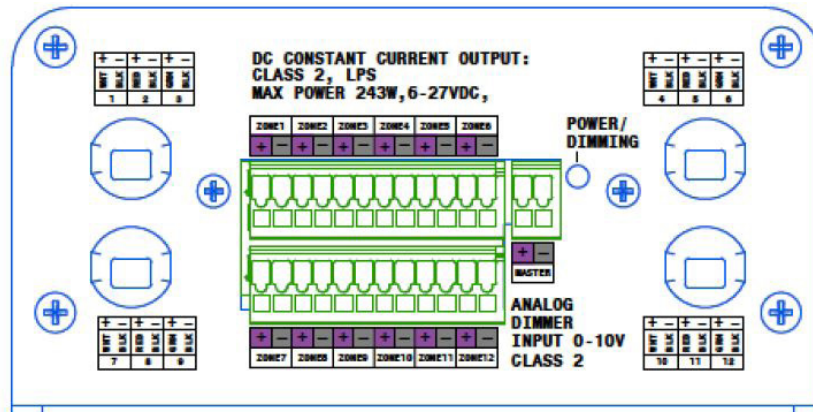
Control Interface

Control Method	Analog 0-10 Vdc, IEC 60929, ETSA E1.3-2001, Class 2 outputs
Control Zones	Master, Zone 1, Zone 2, Zone 3, Zone 4 outputs each source 0.5 mA maximum
Loss of Analog Input Signal	Outputs will go to 100% light intensity in less than 1 second.

Mechanical Specifications



End Panel



For more information, please contact:

+1 (727) 827-2805

sales@lumastream.com

LumaStream, Inc. reserves the right to make changes without further notice to any products herein to improve reliability, function, or design. LumaStream does not assume any liability arising out of the application or use of any product described herein; neither does it convey any license under its patent rights, nor the rights of others.

LSPS11 / Trinity 6 Analog 4 Zone

