

# 701 Sconce

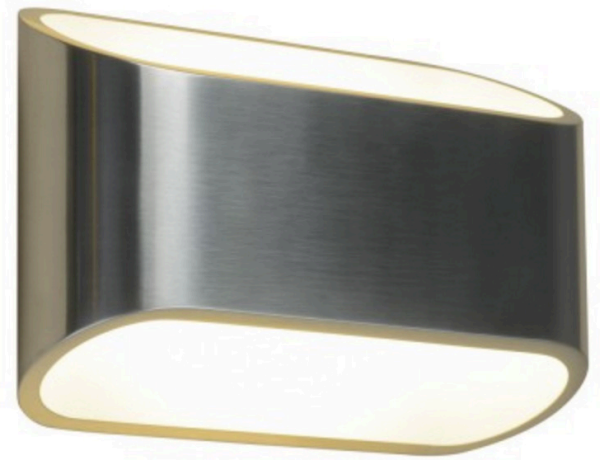
## Decorative

Indirect wall sconce with open appearance.

### Product Description

This fully dimmable low-voltage LED fixture wall sconce creates an architectural feel. This Class 2 solution contains no electronics in the fixture. The dimming control, power conversion and constant current drivers for multiple fixtures are housed in a remote DC, Class 2 intelligent power supply, which can be located up to 150' away from the fixtures.

**Ideal applications:** residential, hospitality, retail, architectural lighting.



Schedule ID	
Part Number	
Notes	

### Performance Summary

Light Output	747 - 995 lumens
CCT	3000K
CRI	90+
Compatible Power Supply	70-12-0350-XXX
	70-12-0450-XXX
	70-09-0500-XXX
	70-08-0700-XXX
Forward Voltage	18 Vf max, 2 per channel, 70 series Trinity
L70 Lifetime	50,000+ hours
Warranty	5-year limited warranty
Dimming	Dimmable to 0.2%

### Ordering Information Example: 701-WF30-CW

701	-		-	
Base	Beam	CCT	Finish	
<b>701</b>	<b>WF</b> Wide Flood	<b>30</b> 3000K	<b>BG</b> Black w/ Gold Interior <b>CW</b> Clear (Brushed Aluminum) w/ White Interior	

# 701 Sconce Specifications

## Light Output

Drive Current	CCT	Lumens	Voltage	Watts	Lumens/Watt	CRI
500 mA	3000K	747	18	9	83	90+
700 mA	3000K	995	18	12.6	79	90+

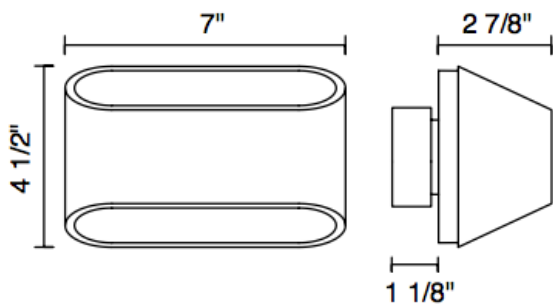
## Construction & Materials

Weight	4.68 lbs
Material	Die Cast Aluminum
Optics	Acrylic / Glass
Operating Temperature	-4°F to 113°F / -20°C to 45°C
Mounting Options	Universal Plate

## Certifications & Qualifications

ETL Certified to UL 1598	Yes
Suitable for Damp Locations	Yes
RoHS Compliant	Yes

## Mechanical Specifications



## Color Options

**BG-** Black/Gold



**CW-** Clear/White



For more information, please contact:

+1 (727) 827-2805

sales@lumastream.com

LumaStream, Inc. reserves the right to make changes without further notice to any products herein to improve reliability, function, or design. LumaStream does not assume any liability arising out of the application or use of any product described herein; neither does it convey any license under its patent rights, nor the rights of others.

LS0234 / 701 Sconce



Rev: 4/04/2019